

# SWAGE STUD, LEFT HAND, UNF

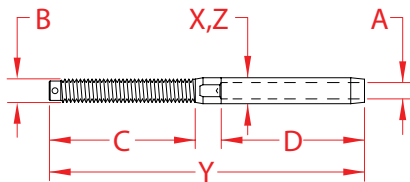
## 316 STAINLESS STEEL



Import



Precision  
Machined



ITEM	A (wire)	B (thread)	C	D	BEFORE (swage)	AFTER (swage)	X (height)	Y (length)	Z (width)	WT (lb)	PACKAGING TYPE	EACH (qty)	INNER (qty)	CARTON (qty)	UPC
S0732-0703	1/8"	1/4"	2.20"	1.51"	0.25"	0.22"	0.25"	4.33"	0.25"	0.04	POLYBAG	1	50	1,000	791506049319
S0732-0704	5/32"	1/4"	2.15"	1.76"	0.30"	0.25"	0.30"	4.68"	0.30"	0.06	POLYBAG	1	50	600	791506049326
S0732-0705	3/16"	1/4"	2.19"	2.01"	0.36"	0.31"	0.36"	4.96"	0.36"	0.08	POLYBAG	1	50	500	791506049333
S0732-0904	5/32"	5/16"	2.42"	1.76"	0.36"	0.31"	0.36"	4.85"	0.36"	0.07	POLYBAG	1	50	500	791506049340
S0732-0905	3/16"	5/16"	2.50"	2.01"	0.36"	0.31"	0.36"	5.14"	0.36"	0.09	POLYBAG	1	10	400	791506049357
S0732-1005	3/16"	3/8"	2.68"	2.01"	0.36"	0.31"	0.36"	5.26"	0.36"	0.12	POLYBAG	1	10	250	791506049364
S0732-1007	1/4"	3/8"	2.75"	2.51"	0.49"	0.44"	0.49"	5.87"	0.49"	0.19	POLYBAG	1	10	200	791506049371
S0732-1307	1/4"	1/2"	3.00"	2.51"	0.49"	0.44"	0.49"	6.44"	0.49"	0.28	POLYBAG	1	10	150	791506049388
S0732-1309	5/16"	1/2"	3.12"	3.01"	0.64"	0.56"	0.64"	7.63"	0.64"	0.43	POLYBAG	1	1	75	791506049395
S0732-1610	3/8"	5/8"	4.00"	3.51"	0.70"	0.63"	0.70"	8.73"	0.70"	0.68	POLYBAG	1	5	50	791506049401
S0732-2013	1/2"	3/4"	4.75"	4.67"	0.84"	0.75"	0.84"	10.25"	0.84"	1.07	POLYBAG	1	5	40	791506049418

### NOTE:

**S0731-SERIES AND S0732-SERIES ARE FOR MACHINE SWAGE ONLY. FOR PROPER FUNCTIONING, OBSERVE CORRECT "AFTER" DIMENSIONS. ALL DIMENSIONS ARE NOMINAL (+/- 3%) AND ARE SUBJECT TO CHANGE WITHOUT NOTICE.**